



**ALASKA DIVISION OF HOMELAND SECURITY &
EMERGENCY MANAGEMENT**
SITUATION REPORT 24-103 • April 12, 2024



Toll-Free 1.800.478.2337

Anchorage Area 907.428.7000

SEOC 907.428.7100

<p><u>SEOC Preparedness Level</u> Level 1 – Routine Operations.</p>	<p align="center">http://ready.alaska.gov</p>	<p><u>National Terrorism Advisory System:</u> Read the NTAS Bulletin here</p>
<p>Maritime Security (MARSEC) Level:1- Minimum Appropriate Security Measures</p>	<p align="center">WHO Novel Coronavirus Pandemic (COVID-19): 2019 Novel Coronavirus</p>	<p><u>Alaska Military Installation Force Protection Level:</u> FPCON Bravo</p>

(Significant changes from previous situation reports are red.)

Significant Issues:

Kivalina Structure Fire -

Pursuant to Governor Dunleavy’s declaration of disaster for the City of Kivalina and the Northwest Arctic Borough, SEOC has begun implementation of the state disaster Individual Assistance and Public Assistance programs while coordinating with the Borough for support of response and recovery operations.

State of Alaska Department of Health (DOH)

The DOH stands ready to assist with all aspects of public health and, in the event of a public health emergency, is supported by the SEOC and other state departments as required.

For current information, see: <https://health.alaska.gov/dph/Pages/default.aspx>
<https://health.alaska.gov/dph/Emergency/Pages/prepared/default.aspx>

NTAS Bulletin

The U.S. Department of Homeland Security issued an updated National Terrorism Advisory Bulletin on May 24, 2023. The current and expired bulletins can be viewed at the below link.
<https://www.dhs.gov/national-terrorism-advisory-system>

Travel Alerts and Conditions

For current driving conditions, dial 511 or visit: <https://511.alaska.gov/>

Barry Arm Landslide / Tsunami Risk

For the latest information on the Barry Arm Landslide and Tsunami risk, click here:
<https://dggs.alaska.gov/hazards/barry-arm-landslide.html>

Earthquakes

United States Geological Service (USGS) Earthquake Information: <http://earthquake.usgs.gov/>
National Tsunami Warning Center: <http://tsunami.gov/>

Alaska Volcanoes

Great Sitkin Alert Level: Watch and Aviation Color Code: **Orange**
Shishaldin Alert Level: Advisory and Aviation Color Code: **Yellow**

For Alaska Volcano updates, go to: <https://www.avo.alaska.edu/>

Air Quality Index (AQI) Advisories

For the most up-to-date Air Quality Index Advisories:
<http://dec.alaska.gov/Applications/Air/airtoolsweb/Home/Index>

Spills of Oil and Hazardous Substances

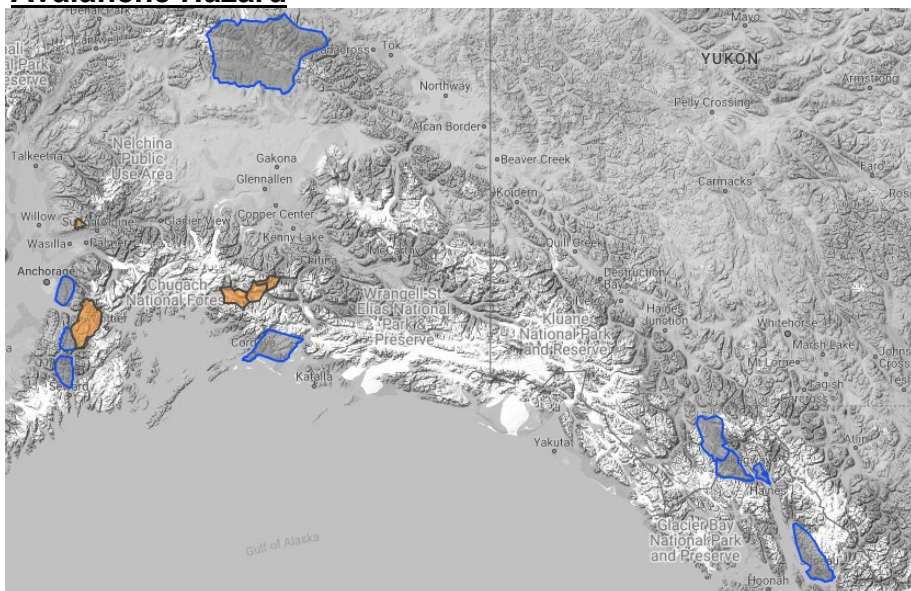
The Alaska Division of Environmental Conservation (ADEC) Spill Prevention and Response page is located at:
<https://dec.alaska.gov/spar/>

Alaska Cyber Security Information

State Employees may sign up for cybersecurity notifications and alerts at
<https://oit.alaska.gov/security>

Cybersecurity and Infrastructure Security Agency (CISA)-Cybersecurity Services and Tools:
www.cisa.gov/free-cybersecurity-services-and-tools

Avalanche Hazard



Travel in avalanche terrain is not recommended. Avoid being on or beneath all steep slopes.

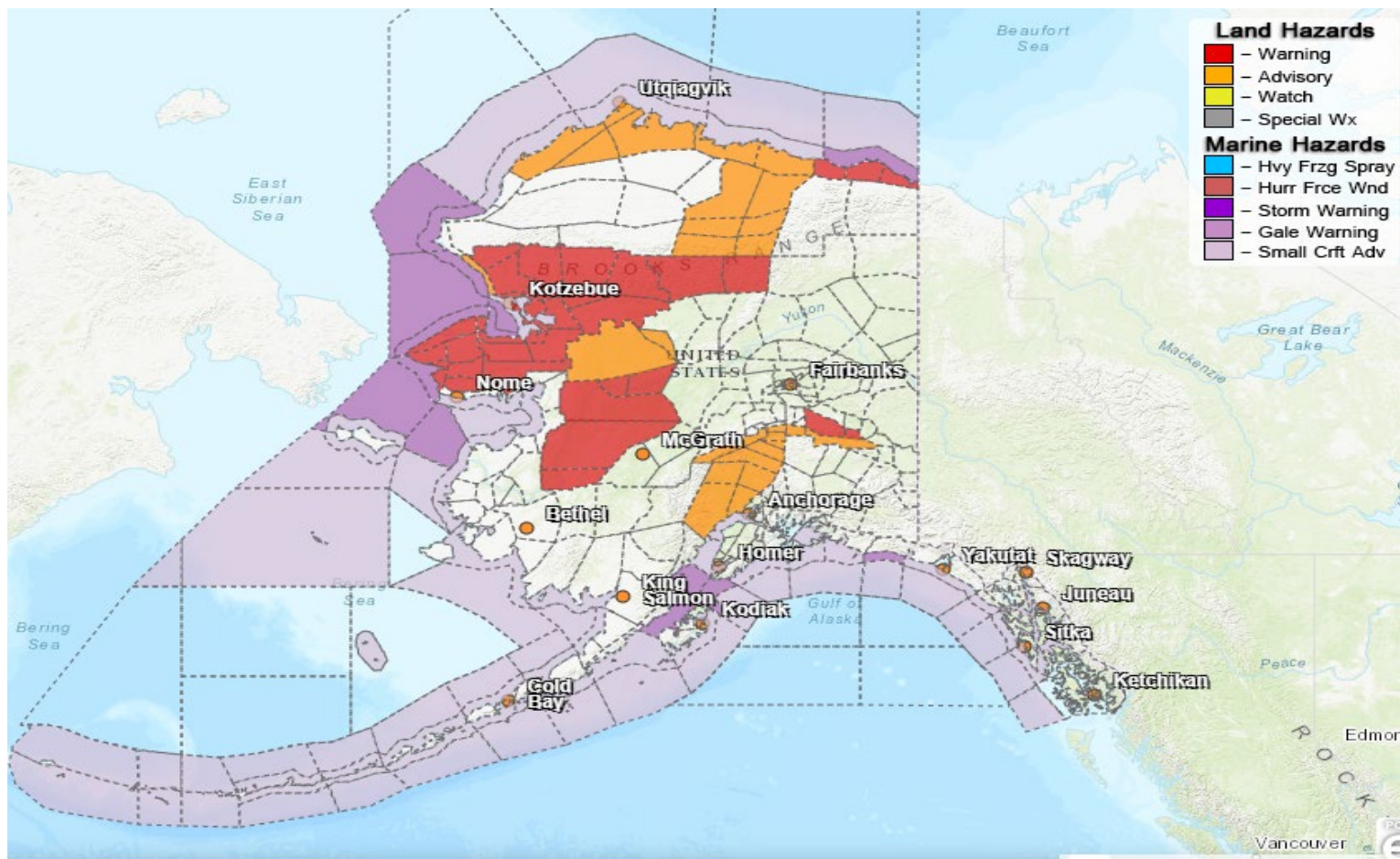
Turnagain Pass- Considerable today above 2500'

Valdez-Considerable above 3000'

Hatcher Pass-Considerable for storm slabs and persistent slabs at all elevations

For information and the most current avalanche conditions, go to <https://alaskasnw.org>

Significant Weather:



For more information and the most current weather, Watches / Warnings / Advisories go to:
<https://www.weather.gov/arh/>

Blizzard Warning:

- **Baldwin Peninsula, Northern Seward Peninsula-** until 5 pm today
- **Shishmaref, Bering Strait Coast** – until 10am today

High Wind Warning:

- **Eastern Alaska Range North of Trims Camp-**until 10am this morning

Winter Storm Warning:

- **South Slopes of the Western Brooks Range, Noatak Valley, Lower and Upper Kobuk Valley-** until 4pm this afternoon
- **Eastern Beaufort Sea Coast-** 4pm today until 6am Saturday
- **Interior Seward Peninsula-**until 3pm this afternoon

Winter Weather Advisory:

- **Kivalina and Red Dog Dock** – until noon today
- **Susitna Valley-**until 10am this morning
- **Northern Artic Coast-**until 8pm this afternoon
- **Central Artic Plains-**noon today until 10pm this evening

- **Lower Koyukuk Valley-until 4pm this afternoon**

The Next Situation Report will be **April 15, 2024**. A significant change in the situation or the threat level will prompt an interim report. This report is posted on the internet at <https://ready.alaska.gov/sitrep>.

To register for email distribution, go to <http://list.state.ak.us/mailman/listinfo/dhsem.situation.report>. Direct questions regarding this report to the SEOC at 907-428-7100 or seoc@alaska.gov.